

A new species of *Filicivora* Leschen et Lawrence, 1991 (Coleoptera: Mycetophagidae) from Chile

Новый вид рода *Filicivora* Leschen et Lawrence, 1991 (Coleoptera: Mycetophagidae) из Чили

J. Háva
И. Гава

Forestry and Game Management Research Institute, Strnady 136, Praha 5 - Zbraslav CZ-156 00 Czech Republic. E-mail: jh.dermestidae@volny.cz.

Научно-исследовательский институт охотничьего хозяйства, Странды 136, Прага 5 - Збраслав CZ-156 00 Чешская Республика.

Key words: taxonomy, description, new species, Coleoptera, Mycetophagidae, *Filicivora*, Chile.

Ключевые слова: Таксономия, описание, новый вид, Coleoptera, Mycetophagidae, *Filicivora*, Чили.

Abstract. A new species from Chile, *Filicivora angelinii* sp.n. is described, illustrated and compared with the similar species *Filicivora chilensis* (Philippi et Philippi, 1864); it differs by the elytral spots, structure of the wings, antennae and male genitalia.

Резюме. В статье из Чили описан новый вид *Filicivora angelinii* sp.n., который близок к *Filicivora chilensis* (Philippi et Philippi, 1864). Новый вид отличается пятнами надкрылий, строением крыльев и усиков, а также гениталиями самца.

Introduction

The genus *Filicivora* Leschen et Lawrence, 1991 was erected to include *Filicivora chilensis* (Philippi et Philippi, 1864) described from the Juan Fernandez Islands as *Mycetophagus*. Leschen and Lawrence [1991] transferred the species and a variety described by Pic [1940] to their new genus. During the determination of the mycetophagid collection deposited at the coll. F. Angelini, Museo Zoologico «La Specola», Firenze, Italy, I found a new species of *Filicivora* from continental Chile, as described below.

Material and methods

The size of the beetles or of their body parts can be useful in species recognition and thus, the following measurements were made:

total length (TL) — linear distance from anterior margin of head to apex of elytra;

elytral width (EW) — maximum linear transverse distance.

The material is deposited in the following collections: **JHAC** — Jiří Háva, Private Entomological Laboratory & Collection, Ůnětice u Prahy, Prague-West, Czech Republic; **MZUF** — coll. F. Angelini, Museo Zoologico «La Specola», Firenze, Italy (Luca Bartolozzi).

Specimens of the presently described species are provided with red, printed labels with text as follows: «HOLOTYPE (or PARATYPE, respectively) *Filicivora angelinii* sp.n. Jiří Háva det. 2021».

Results

Filicivora angelinii Háva, sp.n.

Figs 1–4.

Type material. *Holotype* (♂): Chile SC, Curicy prov., 15 km E Potrero Grande, 29.Nov.1995, leg. J.E. Barriga, (MZUF). *Paratypes*: (2♀♀): the same locality as holotype (MZUF, JHAC); (4 spec.): Chile SC, Curicy prov., 20 km E Potrero Grande, El Relvo (T/Malaise), 21 dic.2003, 35°11.14' S, 70°56' W, leg. J.E. Barriga, (2 MZUF, 2 JHAC); (3 spec.): Chile SC, Curicy prov., Fdo Las Tablas, 5 km E Potrero Grande, abr.1998, leg. J.E. Barriga, (MZUF); (2♀♀): Chile SC, Malleco prov., PN Nahuelbuta, 12.Feb.2005, leg. J.E. Barriga, fogging, *Nothofagus dombeyi*, 1200 m, 37°47' S, 73° W, (MZUF).

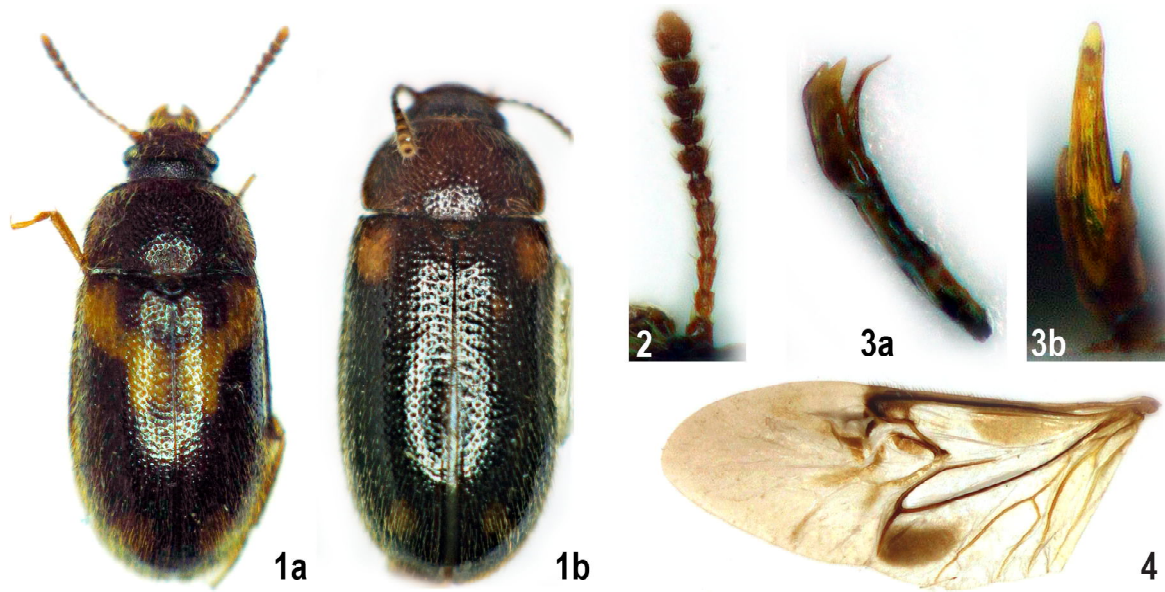
Description. Male. Body measurements TL 3.9 mm, EW 1.7 mm; elongate-oval, subparallel-sided; weakly convex dorsally, weakly glossy; mostly dark brown, covered with brownish and yellow erect setation; mouth parts, legs brown; elytra dark brown with orange spots.

Head with dense and coarse punctures; ocular distance about 2.5 times wider than diameter of eyes; covered by yellowish, erect setation; labrum brown; eyes prominent laterally in dorsal view, coarsely faceted and emarginate near antennal insertions; antennae brown with 11 antennomeres, antennomeres I–V, XI lightly brown, VI–X dark brown (Fig. 2); palpi dark brown, apical maxillary palpomere cylindrical.

Pronotum brown, convex dorsally, rugose, with large and dense punctures; widest at middle, gradually narrowed anteriorly and posteriorly; anterior margin slightly arcuate; lateral sides distinctly margined, roundly arcuate; basal margin sinuate, with short and circular grooves subbasally.

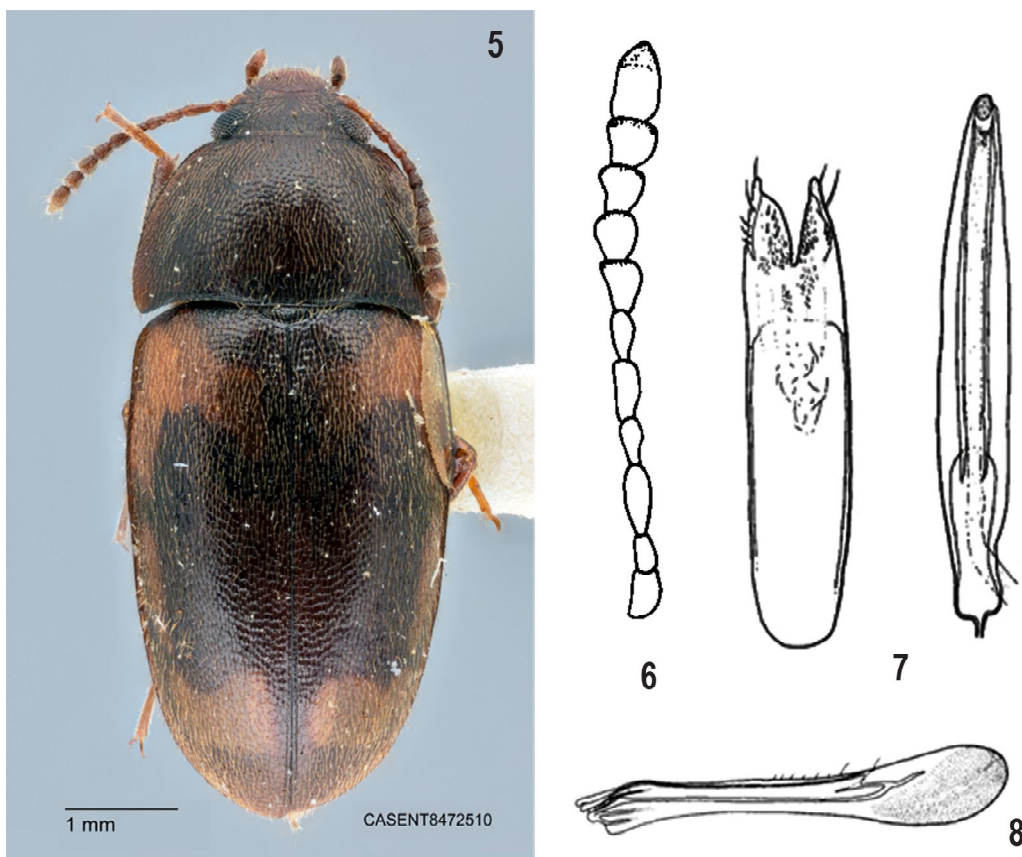
Scutellum brown, triangular, with short recumbent brown setation.

Elytra with yellow and brown erect setation, elongate, subparallel-sided, narrowed from apical 1/4 to apex; brown with orange patches (Fig. 1a), punctate-striate, punctures



Figs 1–4. *Filicivora angelinii* sp.n.: 1a — habitus of holotype, dorsal; 1b — habitus of paratype with reduced spots, dorsal; 2 — antenna; 3a — male genitalia, lateral; 3b — male genitalia, tip of median lobe, ventral; 4 — wing.

Рис. 1–4. *Filicivora angelinii* sp.n.: 1a — габитус, голотип, вид сверху; 1b — габитус, паратип с редуцированными пятнами, вид сверху; 2 — антенна; 3a — гениталии самца, вид сбоку; 3b — гениталии самца, верх медиальной лопасти, вид снизу; 4 — крыло.



Figs 5–8. *Filicivora chilensis*: 5 — habitus, dorsal (photo by Christopher C. Grinter, California Academy of Sciences); 6 — antenna; 7 — male genitalia; 8 — wing. Figs. 6–8, according to Leschen and Lawrence [1991].

Рис. 5–8. *Filicivora chilensis*: 5 — габитус, вид сверху (фотография К.К. Гринтера, Калифорнийская академия наук); 6 — антенна; 7 — гениталии самца; 8 — крыло. Фиг. 6–8, по Leschen и Lawrence [1991].

very deep, small and regular; interstices flat, narrower than striae. Wing as Fig. 4.

Meta-meso ventrite dark brown, with yellow recumbent setation, finely punctured.

Abdominal ventrites brown, with long yellow recumbent setation, finely punctured.

Male genitalia (Figs. 3a, b).

Female. Similar to male.

Variability. Body measurements TL 3.3–4.5 mm. Elytral cuticula dark brown to light brown. Elytral spots are variable from Fig. 1a to reduced as Fig. 1b.

Comparison. The new species differs from *Filicivora chilensis* (Philippi et Philippi, 1864) (= *Mycetophagus*) described from the Juan Fernandez Islands by the elytral spots, structure of wings, antennae and male genitalia. All characters are illustrated.

Distribution. Species known from continental Chile (Fig. 9).

List of *Filicivora* species

Filicivora chilensis (Philippi et Philippi, 1864) — Chile: Juan Fernandez Islands

= *Mycetophagus chilensis* Philippi and Philippi [1864]: 376.

= *Mycetophagus chilensis* var. *sublineata* Pic [1940]: 379.

Filicivora angelinii Háva, **sp. nov.** — Chile continental

Acknowledgements

I am very indebted to Luca Bartolozzi and Fernando Angelini (both MZUF) for loaning me the interesting material, to Christopher C. Grinter (California Academy of Sciences, USA) for the photo of *Filicivora chilensis*, and to Larry G. Bezark (Sacramento, U.S.A.) for the revision of the English text of the manuscript. The paper was supported by the Ministry of Agriculture of the Czech Republic, institutional support MZE-RO0118.



Fig. 9. Distributional map of *Filicivora angelinii* sp.n. (*) and *F. chilensis* (•).

Рис. 9. Распространение *Filicivora angelinii* sp.n. (*) и *F. chilensis* (•).

References

- Leschen R.A.B., Lawrence J.F. 1991. Fern sporophagy in Coleoptera from the Juan Fernandez Islands, Chile, with descriptions of two new genera in Cryptophagidae and Mycetophagidae // Systematic Entomology. Vol.16. P.329–352.
- Philippi R.A., Philippi F. 1864. Beschreibung einiger neuen chilenischen Kafer // Stettiner Entomologische Zeitung. Vol.25. P.313–406.
- Pic M. 1940. Coleoptera – Clavicornia et autres de Juan Fernandez. The Natural History of Juan Fernandez and Easter Islands. Vol.III. Zoology. C. Skottsberg (Ed.). Uppsala: Almqvist and Wiksells. P.377–380. 406.